

# IFD6500

# IFD6530

## Instruction Sheet

安 裝 說 明  
安 裝 說 明

USB/RS-485 Communication Interface

USB/RS-485 通訊轉換模組

USB/RS-485 通讯转换模块


DVP-0205730-01

2021-10-28




# **Warning** ..... **ENGLISH**

EN ✈ IFD6500/IFD6530 is an OPEN-TYPE device. It should be installed in a control cabinet free of airborne dust, humidity, electric shock and vibration. To prevent non-maintenance staff from operating IFD6500/IFD6530, or to prevent an accident from damaging IFD6500/IFD6530, the control cabinet in which IFD6500/IFD6530 is installed should be equipped with a safeguard. For example, the control cabinet in which IFD6500/IFD6530 is installed can be unlocked with a special tool or key.

EN ✈ DO NOT connect AC power to any of I/O terminals, otherwise serious damage may occur. Please check all wiring again before IFD6500/IFD6530 is powered up. After IFD6500/IFD6530 is disconnected, Do NOT touch any terminals in a minute. Make sure that the ground terminal  on IFD6500/IFD6530 is correctly grounded in order to prevent electromagnetic interference.

FR ✈ IFD6500/IFD6530 est un module OUVERT. Il doit être installé que dans une enceinte protectrice (boîtier, armoire, etc.) saine, dépourvue de poussière, d'humidité, de vibrations et hors d'atteinte des chocs électriques. La protection doit éviter que les personnes non habilitées à la maintenance puissent accéder à l'appareil (par exemple, une clé ou un outil doivent être nécessaire pour ouvrir a protection).

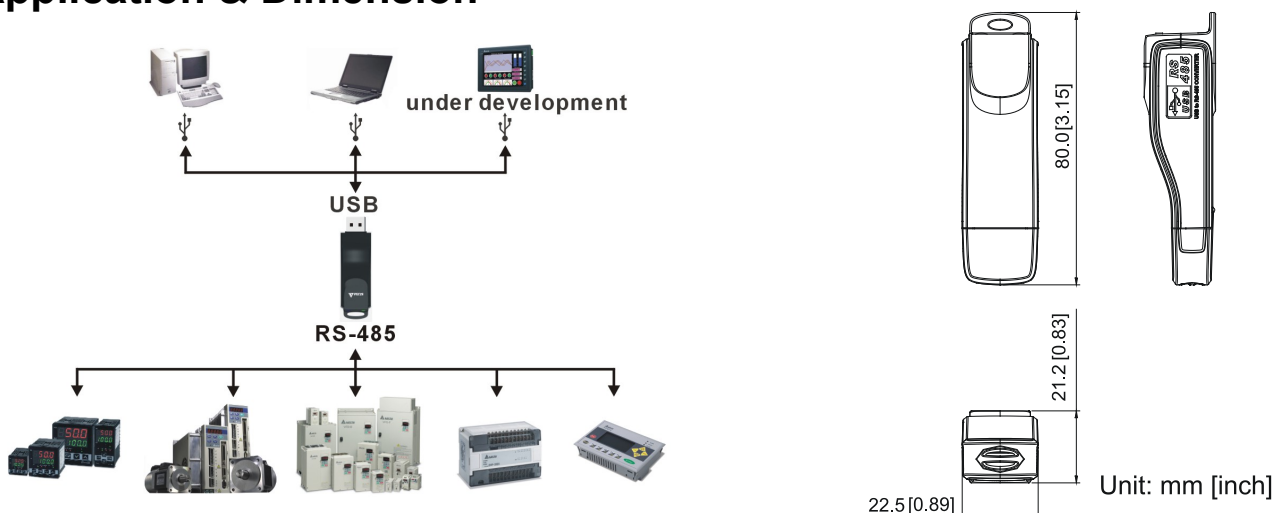
FR ✈ Ne pas appliquer la tension secteur sur les bornes d'entrées/Sorties, ou l'appareil IFD6500/IFD6530 pourra être endommagé. Merci de vérifier encore une fois le câblage avant la mise sous tension du IFD6500/IFD6530. Lors de la déconnection de l'appareil, ne pas toucher les connecteurs dans la minute suivante. Vérifier que la terre est bien reliée au connecteur de terre  afin d'éviter toute interférence électromagnétique.

## ① Introduction

IFD6500/IFD6530 is a convenient RS-485-to-USB converter, which does not require external power-supply or complex setting process. It supports baud rate from 75 to 115.2kbps and auto switching direction of data transmission. In addition, it adopts RJ-45 in RS-485 connector for users to wire conveniently. And its tiny dimension, handy use of plug-and-play and hot-swap provide more conveniences for connecting all DELTA IABU products to your PC. Applicable Models: All DELTA IABU products.

- Please thoroughly read this instruction sheet before installation and putting it into use.
- The content of this instruction sheet and the driver file may be revised without prior notice. Please consult our distributors or download the most updated instruction/driver version at <http://www.deltaww.com>

## ■ Application & Dimension





## ② Specifications

Power supply	No external power is needed
Power consumption	IFD6500: 0.4W ; IFD6530: 1.5W
Isolated voltage	2,500VDC
Baud rate	75, 150, 300, 600, 1,200, 2,400, 4,800, 9,600, 19,200, 38,400, 57,600, 115,200 bps
RS-485 connector	RJ-45
USB connector	A type (plug)

Compatibility	Full compliance with USB V2.0 specification
Max. cable length	RS-485 Communication Port: 100 m
Support RS-485 half-duplex transmission	


## ■ RJ-45

  RJ-45	IFD6500		IFD6530	
	PIN	Description	PIN	Description
	1	Reserved	1	Reserved
	2	Reserved	2	Reserved
	3	Reserved	3	GND
	4	SG+	4	SG-
	5	SG-	5	SG+
	6	Reserved	6	GND
	7	Reserved	7	Reserved
	8	Reserved	8	+9V

## ③ Preparations before Driver Installation

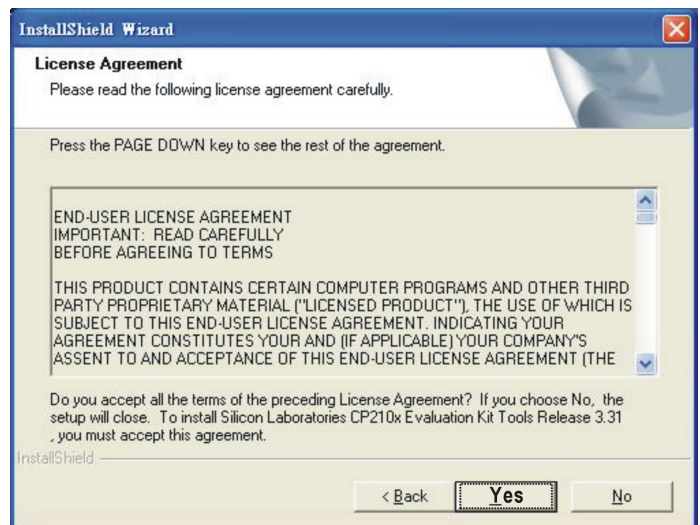
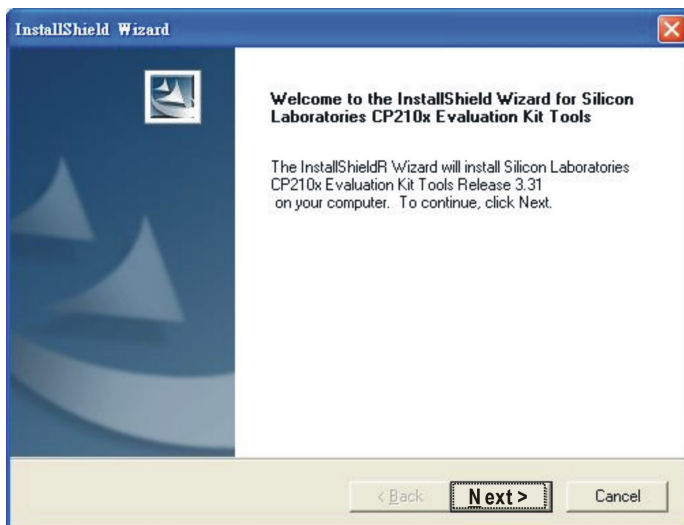
Download the USB driver from our official website

(<https://downloadcenter.deltaww.com/en-US/DownloadCenter>) and follow the steps below to extract it.

 **Note:** DO NOT connect IFD6500/IFD6530 to PC before extracting the driver file.

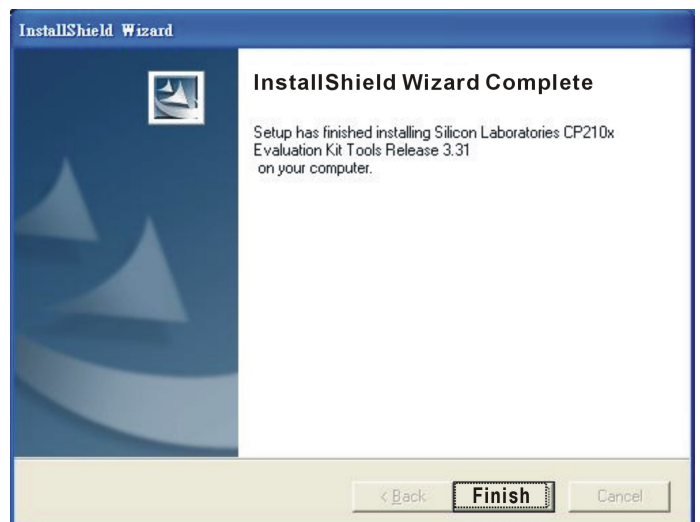
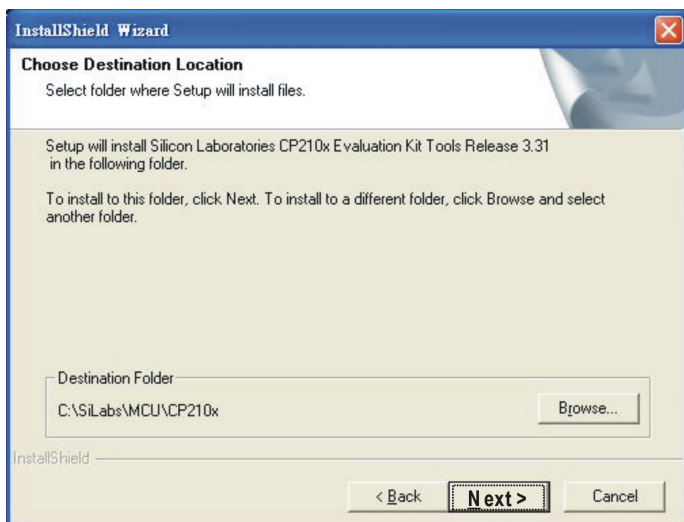
### STEP 1

### STEP 2



### STEP 3

### STEP 4



## STEP 5

You should have a folder marked SiLabs under drive C.

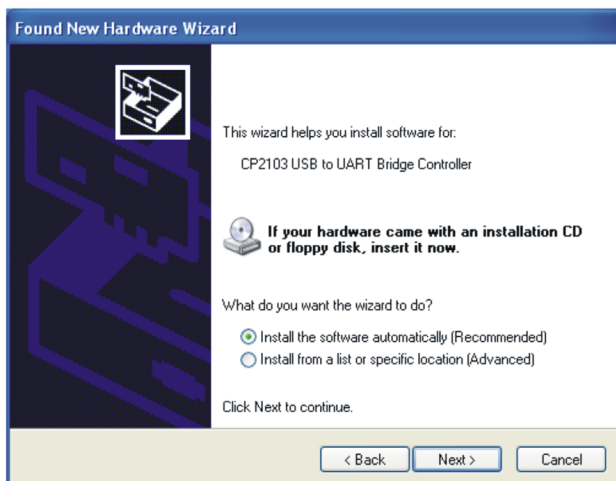
# ④ Driver Installation

After connecting IFD6500/IFD6530 to PC, please install driver by following steps.

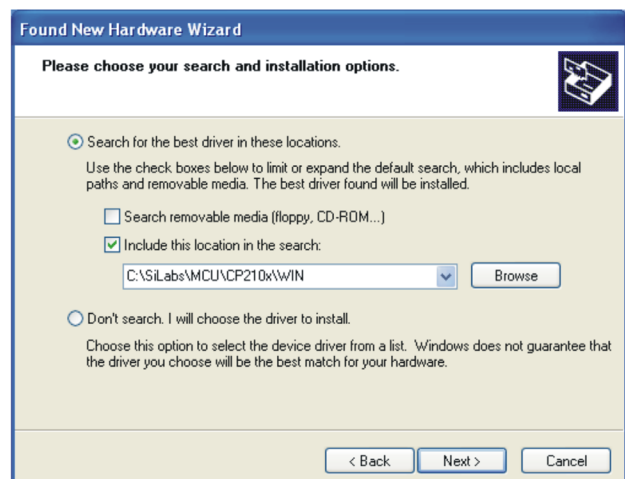
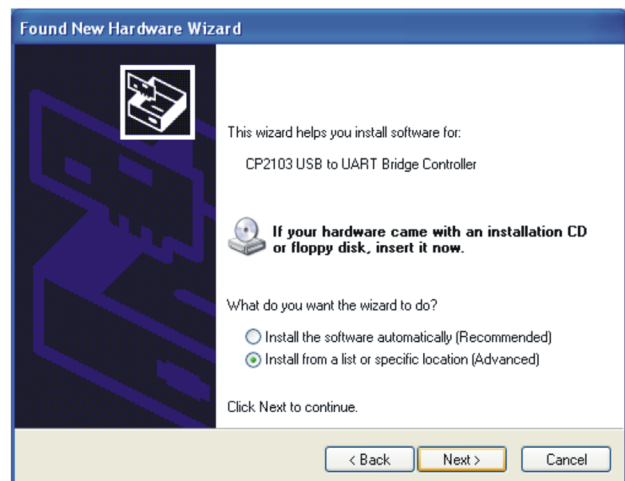
### STEP 1



### STEP 2

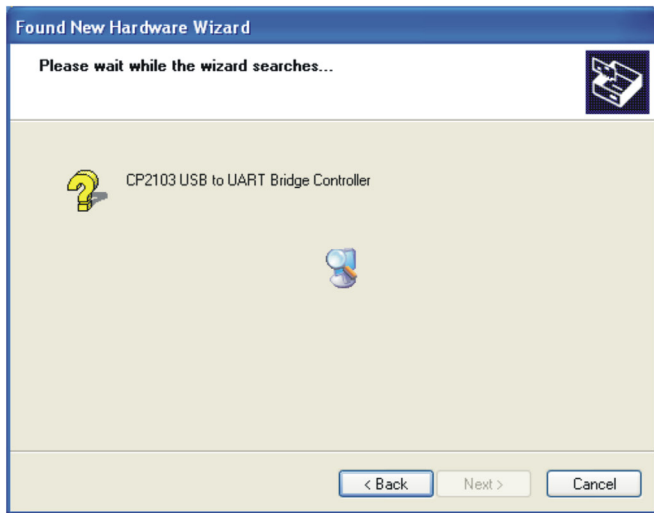
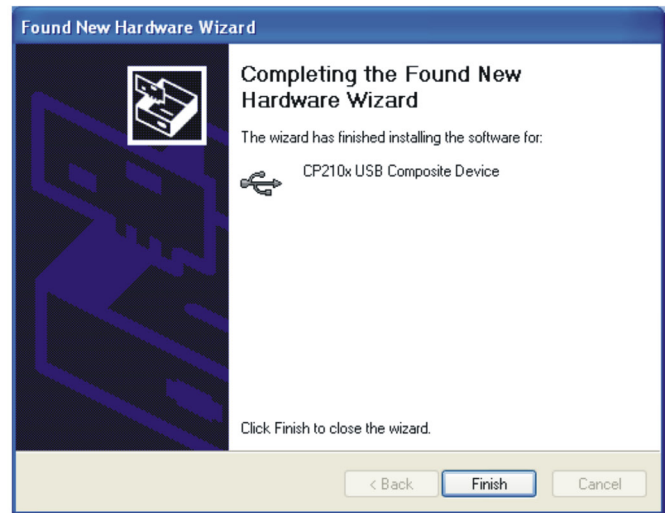


OR



Browse and select directory, or enter  
C:\SiLabs\MCU\CP210x\WIN



**STEP 3****STEP 4****STEP 5**

Repeat Step 1 to Step 4 to complete COM PORT setting.

## ⑤ LED Display

1. Steady Green LED ON: power is ON.
2. Blinking orange LED: data is transmitting.